

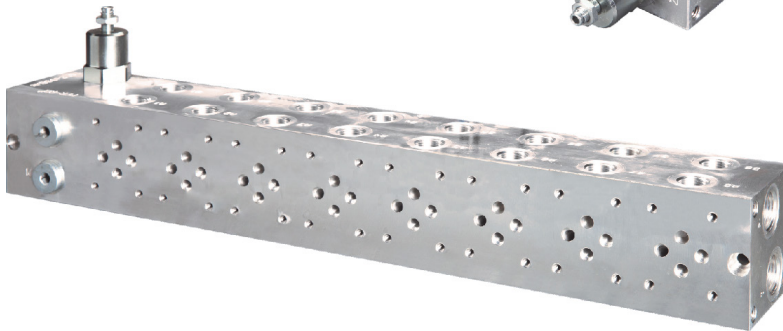
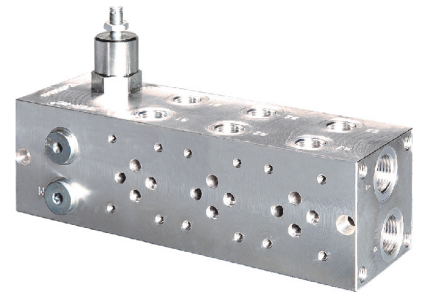
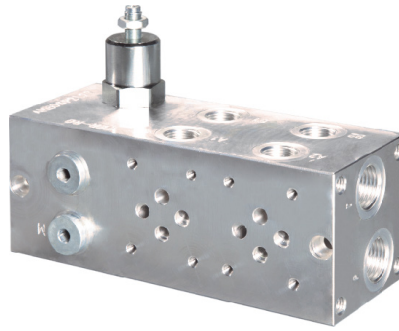


### **FMBNG06 SERİSİ HİDROLİK NG06 VALF PLEYTLERİ**

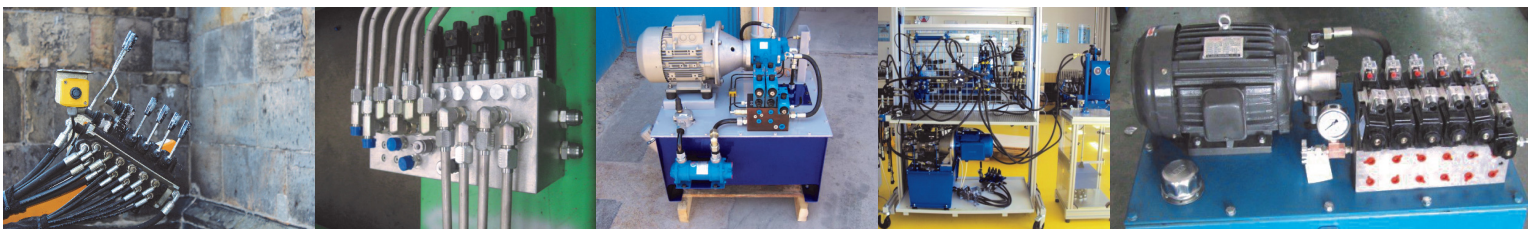
FMBNG06 Serisi Hidrolik NG06 Valf Pleytleri hidrolik sistemlerde pek çok sistem bileşenin birbirleriyle uyumlu ve etkileşimli alışmasını sağlar. Pleytler montaj ve test süresi, maliyet düşürme, sızıntı noktalarının azaltılması gibi konularda etkin çözüm aracı olarak kullanılırlar.

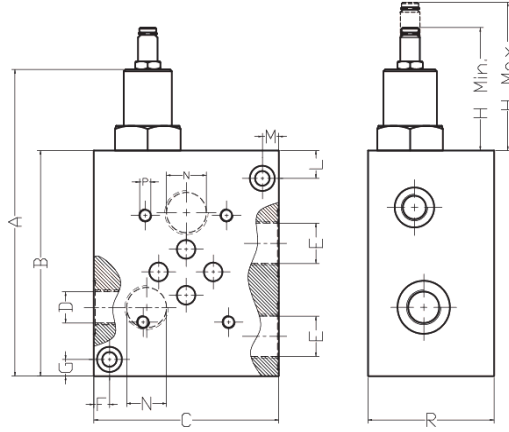
### **FMBNG06 SERIES HYDRAULIC NG06 SUBPLATES**

FMBNG06 hydraulic Subplates are used to interconnect various components within a hydraulic system. Subplates provide improvement on the assembly & test time of your system, save cost, reduce leak points.



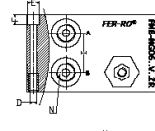
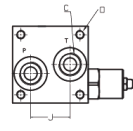
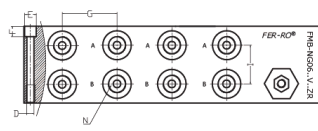
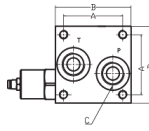
**NG06 Körlme Tapası**  
NG06 Blanking Block



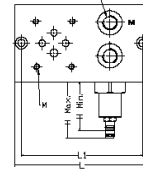
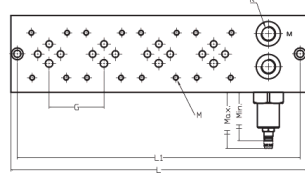


### Teknik Özellikler Technical Specifications

Kod (Code)	Kavite (Cavity)	Çalışma Basıncı (Working Pressure) Bar	Ölçüler - mm (Dimensions) - mm													
			A	B	C	D	E	F	G	H Min.	H Max.	L	M	N	P	R
FMBNG06P82V1ZR	8/2	50 - 380	122	85	72,50	1/4" BSP	3/8" BSP	6,75	7,10	47	56	10,50	6,75	3/8" BSP	M5	48
FMBNG06P102V1ZR	10/2	50 - 380	122	85	72,50	1/4" BSP	3/8" BSP	6,75	7,10	47	56	10,50	6,75	3/8" BSP	M5	48

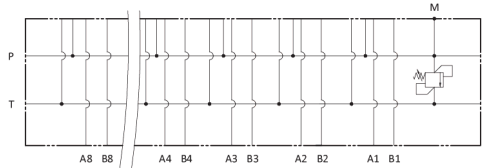


**FMBNG06V1ZR-SC & FMBNG06PV**  
Kodlu tüm ürünlerin tank ve pompa çıkışları yanadadır.

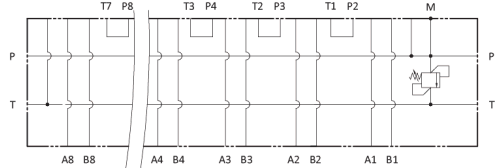


**FMBNG06V1ZR-SC & FMBNG06PV**  
Coded all products tank & pump ports are located at beside.

paralel  
Parallel



seri  
Serial



### Teknik Özellikler Technical Specifications

Kod (Code)	Kavite (Cavity)	Çalışma Basıncı (Working Pressure) Bar	İstasyon (Station)	Ölçüler - mm (Dimensions) - mm																
				A	B	C	D	E	F	G	H Min	H Max	I	J	K	L	L1	M	N	O
FMBNG06V1ZR-SC	8/2	50 - 380	1	54	69	1/2" BSP	M8	10,50	9	-	47	56	34,80	36	1/4" BSP	120	108	M5	3/8" BSP	M8
FMBNG06PV2ZR	8/2	50 - 380	2	54	69	1/2" BSP	M8	10,50	9	50	47	56	34,80	36	1/4" BSP	170	158	M5	3/8" BSP	M8
FMBNG06PV3ZR	8/2	50 - 380	3	54	69	1/2" BSP	M8	10,50	9	50	47	56	34,80	36	1/4" BSP	270	208	M5	3/8" BSP	M8
FMBNG06PV4ZR	8/2	50 - 380	4	54	69	1/2" BSP	M8	10,50	9	50	47	56	34,80	36	1/4" BSP	270	258	M5	3/8" BSP	M8
FMBNG06PV5ZR	8/2	50 - 380	5	54	69	1/2" BSP	M8	10,50	9	50	47	56	34,80	36	1/4" BSP	320	308	M5	3/8" BSP	M8
FMBNG06PV6ZR	8/2	50 - 380	6	54	69	1/2" BSP	M8	10,50	9	50	47	56	34,80	36	1/4" BSP	370	358	M5	3/8" BSP	M8
FMBNG06PV7ZR	8/2	50 - 380	7	54	69	1/2" BSP	M8	10,50	9	50	47	56	34,80	36	1/4" BSP	420	408	M5	3/8" BSP	M8
FMBNG06PV8ZR	8/2	50 - 380	8	54	69	1/2" BSP	M8	10,50	9	50	47	56	34,80	36	1/4" BSP	470	458	M5	3/8" BSP	M8

Kod (Code)	Kavite (Cavity)	Çalışma Basıncı (Working Pressure) Bar	İstasyon (Station)	Ölçüler - mm (Dimensions) - mm																
				A	B	C	D	E	F	G	H Min	H Max	I	J	K	L	L1	M	N	O
FMBNG06SV2ZR	8/2	50 - 380	2	54	69	1/2" BSP	M8	10,50	9	50	47	56	34,80	36	1/4" BSP	170	158	M5	3/8" BSP	M8
FMBNG06SV3ZR	8/2	50 - 380	3	54	69	1/2" BSP	M8	10,50	9	50	47	56	34,80	36	1/4" BSP	270	208	M5	3/8" BSP	M8
FMBNG06SV4ZR	8/2	50 - 380	4	54	69	1/2" BSP	M8	10,50	9	50	47	56	34,80	36	1/4" BSP	270	258	M5	3/8" BSP	M8
FMBNG06SV5ZR	8/2	50 - 380	5	54	69	1/2" BSP	M8	10,50	9	50	47	56	34,80	36	1/4" BSP	320	308	M5	3/8" BSP	M8
FMBNG06SV6ZR	8/2	50 - 380	6	54	69	1/2" BSP	M8	10,50	9	50	47	56	34,80	36	1/4" BSP	370	358	M5	3/8" BSP	M8
FMBNG06SV7ZR	8/2	50 - 380	7	54	69	1/2" BSP	M8	10,50	9	50	47	56	34,80	36	1/4" BSP	420	408	M5	3/8" BSP	M8
FMBNG06SV8ZR	8/2	50 - 380	8	54	69	1/2" BSP	M8	10,50	9	50	47	56	34,80	36	1/4" BSP	470	458	M5	3/8" BSP	M8

\* Not : Valf Pleytlerinde standart 50-380 Bar kartriç kullanılmaktadır.

Düşük bar çalışmasını istediğiniz sistemlerde (0-150 Bar) müşteri temsilcimize bilgi vermenizi rica ederiz.

\* Note : Our Subplates standard cartridges works on 50-380 Bar.

If you want to work on lower bar (0-150 Bar) Please contact with your customer representantive.